

## manufacturer test report

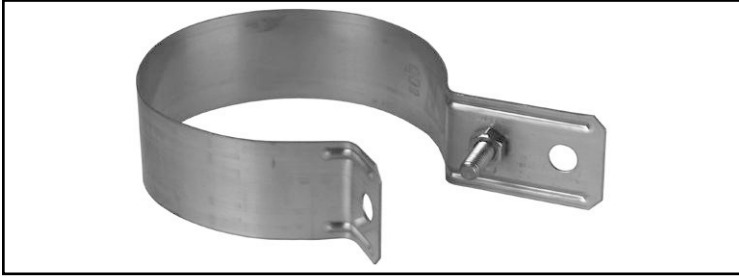
testing according to DIN EN 50164-1 (VDE 0185 part 201)

### Downpipe Clamp Part No. 420 107

material: copper



DEHN + SÖHNE



non-binding figure

#### application: overground

conductor connected	test result
1st conductor : round wire 8 copper 2nd conductor : conduit 100 copper	H
1st conductor : round wire 8 stainless steel 2nd conductor : conduit 100 copper	H

#### caption

withstand lightning current class H 100 kA (10/350  $\mu$ s)

withstand lightning current class N 50 kA (10/350  $\mu$ s)

Detailed data of testing conditions can be requested on demand.